



PREMIUM POWER
P R O D U C T S

Mini Internal Replacement Battery For iPod®

The instructions below come with no warranty or guarantee. Improper assembly or use of excessive force may result in damage to your iPod®. The buyer assumes full responsibility for damages or problems caused by use of these instructions. Installing this battery requires a moderate level of technical ability and proficiency in the use of hand tools as well as a general understanding of electronic components.



Step 1

Step 1

Using the included 4-way multi-screwdriver, carefully pry the white plastic covers from both the top and bottom of the iPod®. The covers will be attached to the case by a small amount of glue.



Step 2

Step 2

Use the small Phillips head screwdriver to remove the two small screws at the top of the iPod®.



Step 3

Step 3

Beneath the bottom plastic cover, there is a small metal clip. Remove this clip by placing the screwdriver in each of the four corners and prying each side loose. The metal clip should come free from the iPod.



Step 4a.

Steps 4a and 4b

4a. A ribbon cable connects the motherboard at the bottom of the iPod®. Use the screwdriver to gently pop the connector out of its socket.

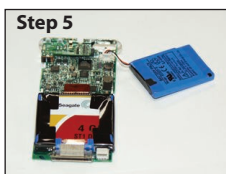
4b. You should now be able to push from the bottom to slide the motherboard out through the top of the iPod® case, giving you access to the battery. Remove the battery by carefully lifting it from its spot and unplugging the power connector from the socket.



Step 4b.

Step 5

Plug in the new battery, securing it into its position on the motherboard. To reassemble the iPod®, start by reconnecting the motherboard cable, then replace the metal clip on the bottom and the two small screws at the top. Replace the top and bottom white plastic covers which should stick to their original glue spots.



Step 5

Your new battery will need a minimum of three hours charge time before its first use.

